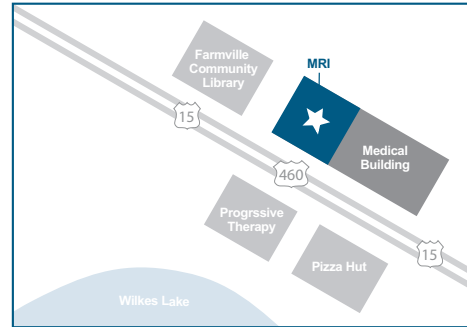


What is an MRI?

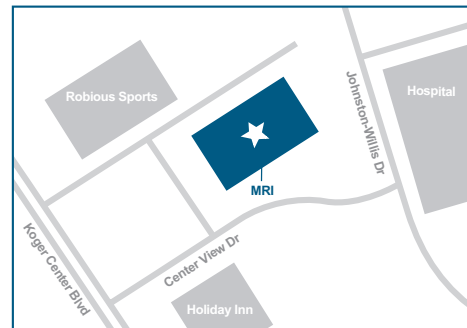
Magnetic resonance imaging (MRI) is a diagnostic technique that provides high-quality images of organs and structures within your body without surgery or radiation. An MRI scanner uses a powerful magnet, radio waves and computer technology to produce detailed pictures of the human anatomy. At OrthoVirginia, we use MRI scanning to analyze your condition and help determine the best course of treatment.

MRI Locations



Farmville

1509 W. Third Street, Suite B
Farmville, VA 23901
434 315 0306



Johnston-Willis

Across the street from Johnston-Willis Hospital
1400 Johnston-Willis Drive
Richmond, VA 23235
804 594 4610



OrthoVirginia

West End Orthopaedic Clinic

MRI

orthovirginia.com



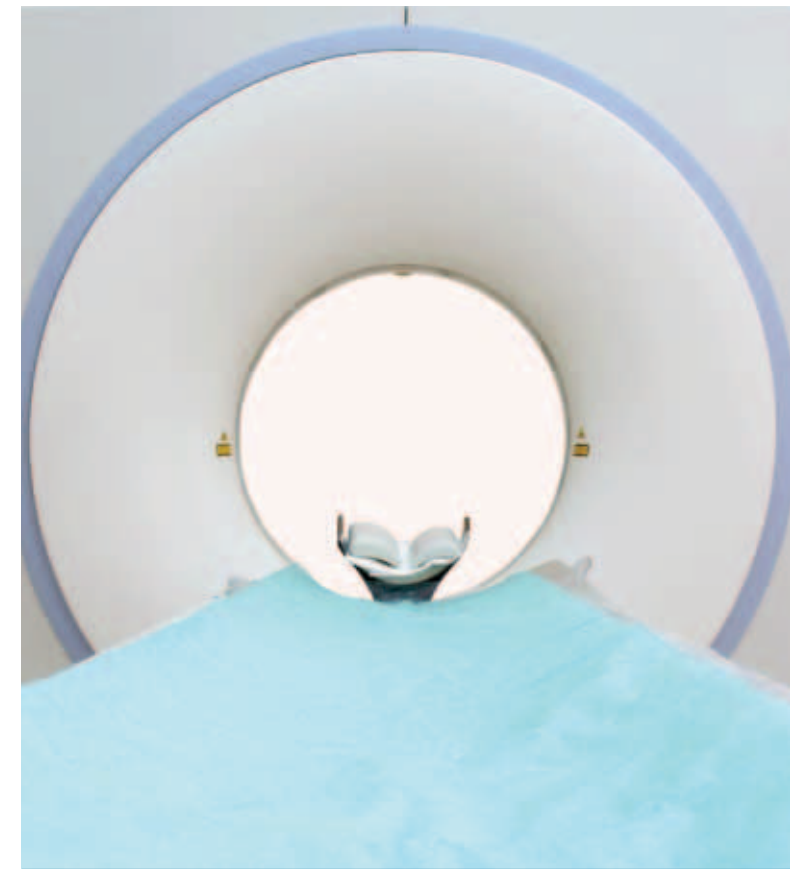
OrthoVirginia

West End Orthopaedic Clinic

MRI

MRI

A patient-friendly,
powerful, diagnostic tool



orthovirginia.com



Patients are often pleasantly surprised to discover that an MRI is one of the easiest and most comfortable medical exams they have experienced.

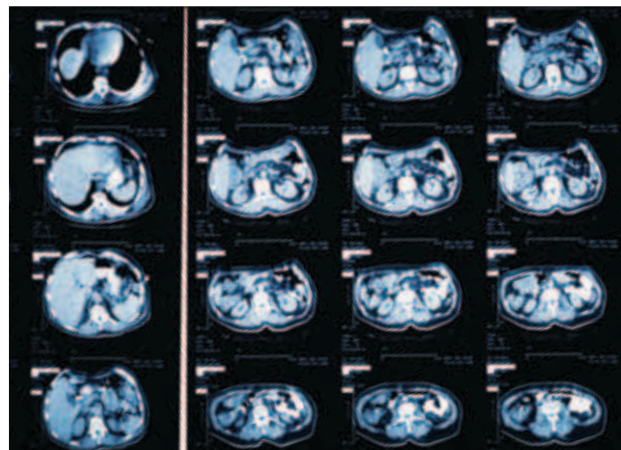
What does an MRI show? An MRI shows images that distinguish between healthy and unhealthy tissue. These images are so precise your physician can often gain as much information as if he or she was looking directly at your body's soft tissues.

Are there any risks? MRI is very safe. There are no health risks associated with the magnetic field or radio waves used by the machine.

How long does an exam take? For most scans the time required is approximately 30 minutes, although it may take longer, depending upon the anatomy or condition for which you are being scanned.

How do I prepare for an MRI? No special preparation is needed. Eat normally and take medication as usual, unless your doctor has given you other instructions. You may find it easier to relax if you avoid drinking coffee or other caffeinated beverages before the exam.

What if I have a metal implant? Before you come in for your MRI we will be asking you some "safety questions." Although most implants do not adversely affect the scan, please let the receptionist know if you have any implants in your body. It is extremely important to let us know if you have a pacemaker, an aneurysm clip, a cochlear implant or a defibrillator, or if you have ever worked with metal or have gotten metal or rust in your eyes.



What will happen when I get scanned? Before your MRI, the technologist will ask you to lie down on a cushioned table, which moves into a large donut-shaped ring. Once the MRI is underway, the technologist will carefully monitor the procedure from the adjacent room. You will be able to speak to him or her through the intercom system. You will hear a knocking sound from the MRI system, which ranges from barely audible to quite noticeable. This is normal.

Do I have to lie still when I have an MRI? Yes. In order to achieve the best imaging results it is important to minimize movement. You should remain relaxed and as still as possible. The hardest part is to be patient.

When is a contrasting agent used? To help improve the clarity of certain structures, sometimes a physician requests an injection of a contrasting agent.

How do I get my results? The radiologist will send the report to your OrthoVirginia physician. After the images have been studied, your doctor will explain the results to you.





OrthoVirginia

West End Orthopaedic Clinic

MRI

MRI Services

MRI SCHEDULE

Location _____

Phone Number _____

Day/Date _____

Arrival Time _____

Referring Physician _____

Before You Come for a Test

Please contact the MRI center if you have any of these items in or on your body. If so, your procedure may need to be rescheduled:

- Pacemaker, wires or defibrillator
- Brain/aneurysm clip
- Ear implant
- Eye implant
- Electrical stimulator for nerves or bones
- Nitroglycerin patch
- Bullet, BBs or pellets
- Infusion pump
- Coil, filter or wire in blood vessel
- Artificial limb or joint
- Surgical stents
- Implanted catheter or tube
- Artificial heart valve
- Penile prosthesis
- Shunt
- False teeth, retainer or metal braces
- Surgical clips, staples, wires, mesh or sutures
- Diaphragm or IUD
- Orthopedic hardware (plates, screws, rods or wires)
- Metal in the eye or face

Please inform the center if you are pregnant, possibly pregnant or breastfeeding.

Before Your Appointment

If your appointment is scheduled at least 48 hours in advance, you will be receiving a call from our staff or the MRI center confirming the date and time you should arrive. If, for some reason, you cannot make the appointment, please call your physician's team to reschedule. It is important we know about the cancellation as soon as possible, so we can notify your insurance company, obtain revised authorizations and reschedule follow-up appointments with your physician.



MRI

Services

The Day of Your Test

- DO arrive 30 minutes early for your appointment (1 hour early if an additional orbit exam is required)
- DO bring your physician's order form
- DO wear loose-fitting, comfortable clothes with no metal or snaps
- DO take any medication prescribed for claustrophobia
- DO have someone drive you to and from the appointment if medications are required

NOTE: No one can accompany a patient into the imaging area. Children must be accompanied at all times in the waiting area.

Before Entering The MRI Scan Room

In the strong magnetic field of the MRI, the following items may become damaged or cause injury. You will be asked to not bring these items with you into the scan room:

- Hearing aids
- Glasses
- Safety pins
- Hair pins/barrettes
- Jewelry, including piercings
- Watches
- Wallets/money clips
- Purses/pocketbooks
- Credit/bank cards
- Artificial limbs
- Metal zippers/buttons
- Belt buckles
- Wigs/hairpieces
- Bras/girdles
- Sanitary belts
- Dentures/retainers

Follow-Up

Your OrthoVirginia physician will discuss your results with you at your next visit or by phone. If you have any questions, please feel free to contact your doctor.

IMPORTANT QUESTIONS ABOUT YOUR MRI
